



AGC Obekon

Your Dreams, Our Challenge

**The King Abdullah
Financial District (KAFD)
World Trade Centre
KAFD Parcel 1.08**

Glass Typology
Stopray Vision-50T

Country: Kingdom of Saudi Arabia
City: Riyadh
Architect: Goettsch Partners
Glazing amount: 25,000 m²



The KAFD is a new development under construction near King Fahad Road in Riyadh. Consisting of 59 towers in an area of 1.6 million square meters, the KAFD is to create a platform of buildings and technology equal to any other major financial centre.

**The King Abdullah
Financial District (KAFD)
World Trade Centre
KAFD Parcel 1.10 -
Crystal Towers**

Glass Typology
Energy ^{NT}

Country: Kingdom of Saudi Arabia
City: Riyadh
Architect: Hening Larsen Architects
Glazing amount: 8,000 m²



The KAFD is a new development under construction near King Fahad Road in Riyadh. Consisting of 59 towers in an area of 1.6 million square meters, the KAFD is to create a platform of buildings and technology equal to any other major financial centre.

**The King Abdullah
Financial District (KAFD)
World Trade Centre
KAFD Parcel 1.11**

Glass Typology
Stopray Vision-50T

Country: Kingdom of Saudi Arabia
City: Riyadh
Architect: Behnisch Architekten
Glazing amount: 20,000 m²



The KAFD is a new development under construction near King Fahad Road in Riyadh. Consisting of 59 towers in an area of 1.6 million square meters, the KAFD is to create a platform of buildings and technology equal to any other major financial centre.

**The King Abdullah
Financial District (KAFD)
World Trade Centre
KAFD Parcel 1.12**

Glass Typology
Stopray Vision-50T

Country: Kingdom of Saudi Arabia
City: Riyadh
Architect: Kling Stubbins
Glazing amount: 20,000 m²

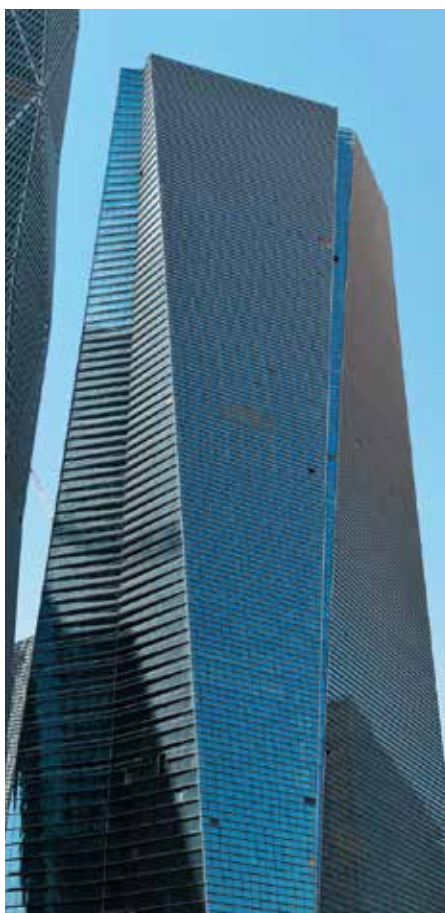


The KAFD is a new development under construction near King Fahad Road in Riyadh. Consisting of 59 towers in an area of 1.6 million square meters, the KAFD is to create a platform of buildings and technology equal to any other major financial centre.

**The King Abdullah
Financial District (KAFD)
World Trade Centre
KAFD Parcel 1.17 -
Tadawul Tower**

Glass Typology
Stopray Vision-36T

Country: Kingdom of Saudi Arabia
City: Riyadh
Architect: Nikken Sekkei Ltd.
Glazing amount: 46,000 m²



The KAFD is a new development under construction near King Fahad Road in Riyadh. Consisting of 59 towers in an area of 1.6 million square meters, the KAFD is to create a platform of buildings and technology equal to any other major financial centre.

**The King Abdullah
Financial District (KAFD)
World Trade Centre
KAFD Parcel 5.07 & 5.08**

Glass Typology

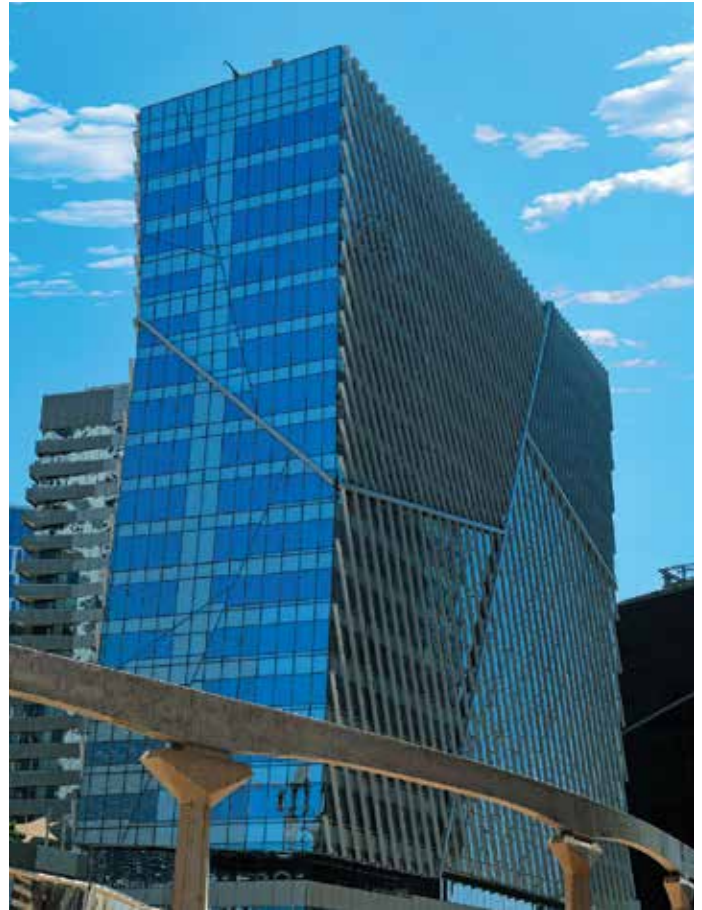
Stopray Vision-36T
Stopray Titanium 37T
Stopsol Supersilver Clear

Country: Kingdom of Saudi Arabia

City: Riyadh

Architect: Omrania & Associates

Glazing amount: 56,000 m²



The KAFD is a new development under construction near King Fahad Road in Riyadh. Consisting of 59 towers in an area of 1.6 million square meters, the KAFD is to create a platform of buildings and technology equal to any other major financial centre.

**The King Abdullah
Financial District (KAFD)
World Trade Centre
KAFD - The Skywalks**

Glass Typology
Stopray Titanium 37T

Country: Kingdom of Saudi Arabia
City: Riyadh
Architect: Hening Larsen Architects
Glazing amount: 100,000 m²

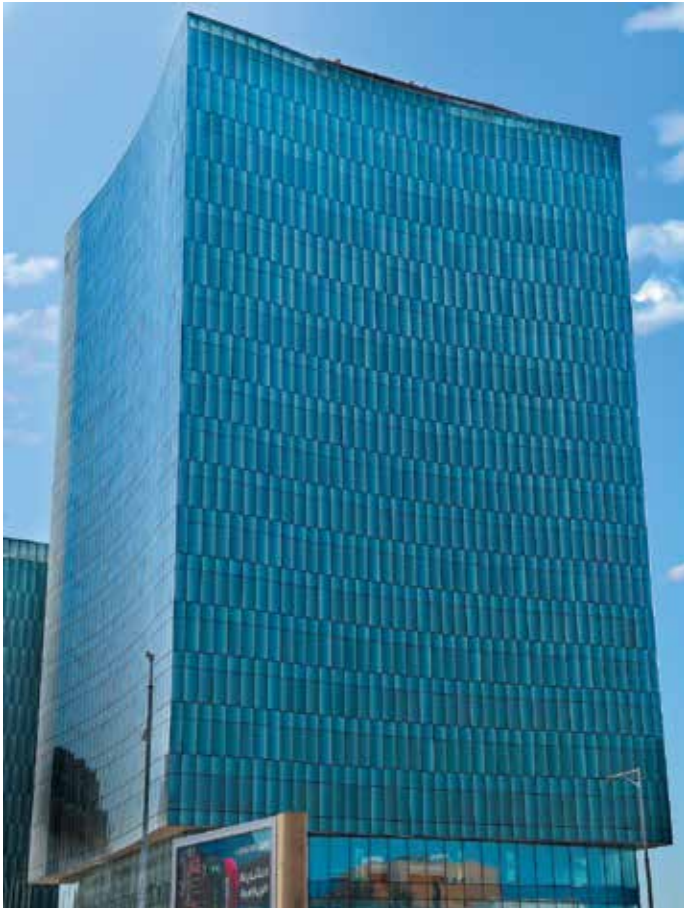


The KAFD is a new development under construction near King Fahad Road in Riyadh. Consisting of 59 towers in an area of 1.6 million square meters, the KAFD is to create a platform of buildings and technology equal to any other major financial centre.

The Assilla Towers

Glass Typology
Stopray Titanium 37T

Country: Kingdom of Saudi Arabia
City: Jeddah
Architect: Mohamad Harasani Architects
Glazing amount: 20,000 m²

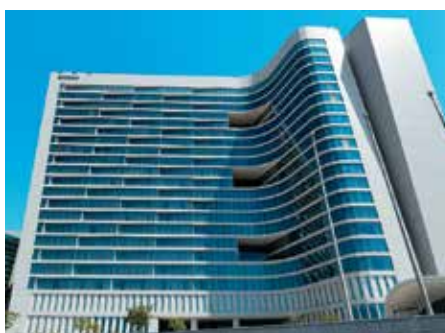
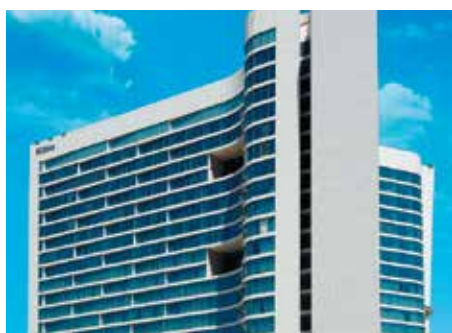


Rising out of the Jeddah's Tahlia Street district in Jeddah, the Assilla Towers have become a landmark building in Jeddah. The 23-storey tower is a 5-star hotel, with a distinctive curved design and eye-catching metallic exterior. The smaller tower, rising 17 storeys, contains mainly serviced apartments.

Hilton Riyadh Hotel & Residence

Glass Typology
Stopray Vision-50T

Country: Kingdom of Saudi Arabia
City: Riyadh
Architect: Omrania & Associates
Glazing amount: 35,000 m²



The 5-star Hilton Hotel & Residence building in Riyadh has become a truly artistic landmark within the capital city of Saudi Arabia. The project occupies a 37,500 m² site and was awarded a prize for hotel architecture.

Leaf Tower ("The Leaf")

Glass Typology
Stopray Vision-36T
Planibel Grey

Country: United Arab Emirates
City: Abu Dhabi
Architect: Etan Consultant
Façade maker: Alico Aluminium
Glazing amount: 170,000 m²



Leaf Tower is a commercial and residential tower located on Al Reem Island in Abu Dhabi. It is deemed as one of the future hallmarks of the island. The plant-like shape of the 228 m tall building is no coincidence, as the structure means it offers panoramic views of the surrounding landscape.

Landmark Group HQ

Glass Typology
Stopray Smart 30/20

Country: United Arab Emirates
City: Dubai
Architect: Arch Group
Façade maker: Alico Aluminium
Glazing amount: 14,000 m²



The office building overlooking Sheikh Zayed Road is on a 1.2 million m² site which will have 453,000 m² office space. The building houses all 4,000 of Landmark Group's retail corporate employees. The company is targeting a LEED Silver rating for its new headquarters.

Saraya Towers

Glass Typology
Stopray Vision-50T
Planibel Azur

Country: United Arab Emirates
City: Abu Dhabi
Architect: Etan Consultant
Glazing amount: 50,000 m²



One of the two striking, luxury residential towers with breathtaking water views of the Abu Dhabi Corniche and the lagoon of Saraya.

The Onyx

Glass Typology
Stopray Smart 30/20

Country: United Arab Emirates
City: Abu Dhabi
Architect: Keo
Façade maker: Alumco
Glazing amount: 34,000 m²



The Onyx is located near the Greens and Emmar Business Park on Sheikh Zayed Road. The scope of the project includes 3 towers with a business hotel, a commercial tower and a mixed use tower in addition to a large selection of retail facilities and restaurants integrated in the building's podium with 4 floors.

Solar panel manufacturing company, HQ

Glass Typology
Stopray Smart 30 on Grey

Country: United Arab Emirates
City: Dubai
Owner: Solar panel manufacturing company
Glazing amount: 4,000 sqm



Headquarters of the solar panel manufacturing company located in Dubai Silicon Oasis. The building was developed following the design guidelines of the owner. Solar panels used in the fence complement the dark grey façade, making the building stand out.

The Residences at Marina Gate - I, II & III

Glass Typology
Stopray Vision-40T

Country: United Arab Emirates
City: Dubai
Architect: AEDAS
Glazing amount: 110,000 sqm



The Residences at Marina Gate consists of three residential towers standing above a cluster of seven-storey podium featuring waterfront villas and boutique retail units. The towers range from 43 to 56 storeys offering spacious modern apartments and duplex penthouses. Each building has its own tropical pool deck and gym.

Damac Heights

Glass Typology
Stopray Smart 30

Country: United Arab Emirates
City: Dubai
Architect: AEDAS
Glazing amount: 45,000 sqm



The award-winning DAMAC Heights is a 420 m high residential tower located in Dubai Marina. The tower rises 84 floors into the sky, affording uninterrupted panoramic views of the ocean and Palm Jumeirah island. Designed by Aedas, DAMAC Heights comes with all the trappings of an indulgent lifestyle, such as world-class amenities.

Vivanta Tower

Glass Typology
Stopray Smart 30

Country: United Arab Emirates
City: Dubai
Architect: Arch Group
Glazing amount: 35,000 sqm



A 46-storey tower featuring 200 hotel rooms, 130 branded apartments, recreational facilities and dining venues is located in Dubai Jumeirah Lakes Towers. Vivanta by Taj hotel extends from the ground floor to the 17th floor, followed by the apartment block of Signature Developers Limited - The Residences.

Amity University

Glass Typology
Stopray Smart 30/20
Stopray Vision-50T

Country: United Arab Emirates
City: Dubai
Architect: Arch Group
Façade maker: Alico Aluminium
Glazing amount: 20,000 m²



Amity University's new campus set to accommodate a total of 5,000 students at full capacity. With its space of 65,000 m², it is the largest academic development in Dubai International Academic City.

The Shard

Glass Typology
ipasol Bright Clear

Country: the United Kingdom
City: London
Architect: Renzo Piano
Glazing amount: 92,000 m²



The tallest building in the European Union, the 306 m tall Shard towers above the south bank of the River Thames, opposite the City of London. Designed with a double-skin façade by architect Renzo Piano, this glittering skyscraper houses offices and luxury apartments.

For the external wall, 40,000 m² of ipasol Bright White solar control glass incorporated in a laminated assembly with extra-clear glass were supplied, 40,000 m² of iplus super-insulating glass integrated in double-glazing incorporating laminated extra-clear glass. The additional 12,000 m² of ipasol Neutral and iplus, used, respectively, for the complex double-glazing in the building's corners and ground floor.

20 Fenchurch Street (The Walkie-Talkie)

Glass Typology
Stopray Vision-50

Country: the United Kindgom
City: London
Architect: Rafael Viñoly



20 Fenchurch Street is a commercial skyscraper in London, in the historic City of London financial district. It has been nicknamed “The Walkie-Talkie” because of its distinctive shape. The 34-storey glass building is 160 m tall, making it the sixth-tallest building in the City of London and the 12th tallest in London.

Allianz Tower (Isozaki Tower)

Glass Typology
Stopray Vision-60T

Country: Italy
City: Milan
Architect: Arata Isozaki & Andrea Maffei Architects
Glazing amount: 120,000 m²



With its 50 floors, the 207 m high tower within CityLife area is one of the tallest buildings in Italy. The base is narrow and long, thus accelerating the building's verticality. A convex glass modular system supported by 3 steel struts reduces wind and seismic loads.

Varesine

Glass Typology
Stopray Vision-50

Country: Italy
City: Milan
Architect: Kohn Pederson Fox
Associates (KPF)
Façade maker: Coopsette
Glazing amount: 40,000 m²



Business District Varesine, awarded LEED Gold 2014, comprises 3 buildings with strong and elegant lines and the complex has become the icon in the Milan marketplace and a new symbol of technology and innovation in Italy.

Warsaw Spire

Glass Typology
Stopray Vision-50T

Country: Poland
City: Warsaw
Architect: Jaspers-Eyers Architects



The Warsaw Spire is a complex of neo-modern office buildings in Warsaw constructed by the Belgian real estate developer Ghelamco. It consists of a 220-metre main tower with a hyperboloid glass façade and two 55-metre auxiliary buildings. The main tower is the 3rd highest building in Poland.

Trinity Park I, II & III

Glass Typology
Stopray Vision-50T

Country: Poland
City: Warsaw
Architect: Konior & Partners
Architects
Glazing amount: 18,000 m²



A highly-successful complex of top-class and modern office buildings invested by Ghelamco. Trinity Park is one of the first buildings in Warsaw for which a BREEAM certification application has been filed.

Iberdrola Tower

Glass Typology
Stopray Ultravision-60T

Country: Spain
City: Bilbao
Architect: César Pelli
Glazing amount: 20,000 m²



At 165 metres and 41 floors high, The Iberdrola Tower is the headquarters of the Iberdrola electricity company. It is the largest of all office skyscrapers rising in Spain. Its façade is covered with 4,800 glass panes designed exclusively for this tower.

Puig Tower

Glass Typology

Stopray Vision-50T on Clearvision
8mm - 16mm 100 % air - Stratobel Clearvision 55.2

Country: Spain

City: Barcelona

Architect: Rafael Moneo

Façade maker: Permasteelisa

Glazing amount: 8,500 m²



Puig is an international company operating in the fashion and fragrance sectors. Its new headquarters building is located in the municipality of Hospitalet de Llobregat, close to Barcelona's Fira, the international exhibition area. 22-storey tower, 109 meters high.

MyZeil

Glass Typology
Stopray Vision-50T

Country: Germany
City: Frankfurt
Architect: Studio Fuksas –
Massimiliano and Doriana Fuksas



MyZeil is a shopping mall with a sculptural glass façade creating impressive and dynamic spaces within the public atriums. The 77,000 m² structure is inspired by the historical context of the site.

Liège-Guillemins Railway Station

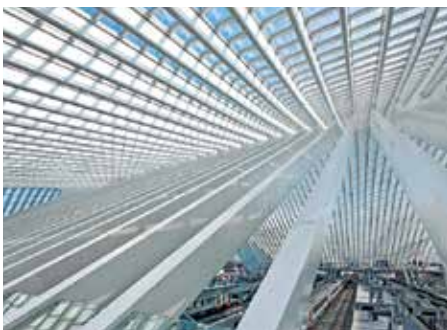
Glass Typology

Stratobel Anti-accident laminated safety glass

Country: Belgium

City: Liège

Architect: Santiago Calatrava



This high-speed railway station is one of the most important hubs in Belgium. It is made of steel, glass and white concrete. It includes a monumental arch, 160 m long and 32 m high. It has 9 tracks and 5 platforms and is used by 15,000 people every day.

Ghelamco Arena

Glass Typology
Stopray Ultra-50 on Clearvision

Country: Belgium
City: Ghent
Architect: Bontick
Glazing amount: 20,000 m²



The Arena is a multi-use stadium that hosts the home matches of football club K.A.A.Gent. It is the first new-built Belgian football stadium since 1974.

Skyway Monte Bianco

Glass Typology

iplus E in triple glazing units on clearvision glass

Country: Italy

City: Courmayeur – Entrèves

Architect: Studio Progetti

Cillara Rossi

Glazing amount: 2,000 m²



The new Mont Blanc cableways, an extreme engineering challenge Skyway Monte Bianco between the eternal ice of Mont Blanc, enable the visitors to set out on a magical journey. The 3 stations at 1,300 m, 2,200 m, and 3,466 m, are connected by 2 cableway sections, which are protected spaces built in AGC's triple glazing units and steel that harmonize with the surrounding environment.



AGC OBEIKAN GLASS

P.O. Box 30083 Yanbu, Light Industrial Park 41912

Kingdom of Saudi Arabia

Tel.: (+966) 14 393 1071

www.agc-obeikanglass.com.sa